

4 SAFETY PRINCIPLES WHEN USING ELEVATORS

PRE-RIDE INSPECTION CHECK BEFORE ENTERING THE ELEVATOR



Observe whether the elevator **stops at the correct position**, at the level, and if the door is fully open. Do not attempt to open the door when the elevator has not completely stopped

Do not use the elevator when it signals an error or maintenance sign. If any unusual signs are noticed, immediately inform the Management Office

SAFE ELEVATOR USE



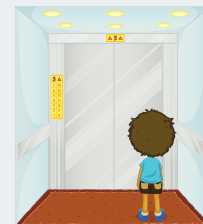
Do not use hands, feet, or objects to block the elevator door. Avoid holding the elevator door open for too long, which may affect the normal operation of the system



Do not attempt to squeeze into the elevator when it's already full. If the elevator has carried the designated number of people, wait for the next trip



Do not lean on the elevator door or door frame to avoid fingers or any part of the body getting caught when the elevator door opens/closes



Children under 12 must be accompanied by parents or supervised adults responsible for their safety and behavior



Prioritize children, disabled individuals, pregnant women, and those entering/exiting the elevator first



Avoid running, jumping, playing around, as it may cause imbalance and collisions inside the elevator
Do not press elevator buttons unnecessarily

IN CASE OF EMERGENCY



In case of fire, absolutely do not use the elevator
Use the stairs to evacuate as per instructions and follow signage



If trapped in the elevator, do not panic or attempt to open the elevator door by yourself. **Press the alarm button immediately** to notify the Management Office. Stay calm and wait for Management Office staff to rescue

FREIGHT TRANSPORTATION



Use a separate elevator designated for freight transportation
Do not use passenger elevators



Ensure that the cargo is securely packaged, not prone to breakage, and does not collide with buttons or scratch elevator walls. The cargo should not exceed the allowed weight limit of the elevator